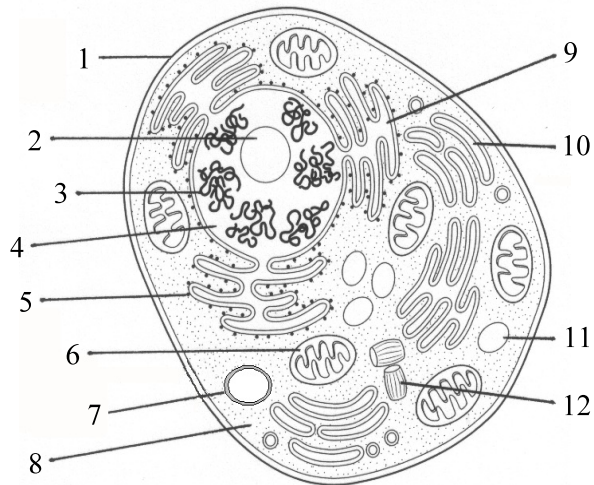
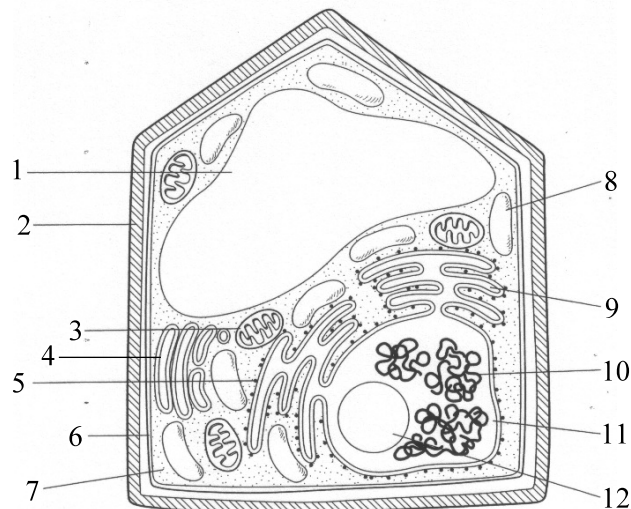


INSTRUCTIONS:

- ① Refer to P.10-16 of your text to name each structure described.
- ② Some of the structures are common to both cells while others are unique to that cell alone. Indicate whether each structure is found only in (A) an animal cell, (P) a plant cell or (B) both.
- ③ Match each structure to the correct number(s). The numbers for each diagram may not be the same!
- ④ Answer Q.1-5/P.16



NOTE:
Outside the cell membrane some cells have flagellum (a tail) or cilia (many tiny hairs) that helps them or their surroundings move.



A#	P#	STRUCTURE	DESCRIPTION	APB?
			<ul style="list-style-type: none"> covers the entire cell acts like gatekeeper to control movement of material in & out of cell 	
X			<ul style="list-style-type: none"> rigid material that surrounds, protects & supports the cell membrane (cellulose) allows gases, water, & some minerals to pass through found only in plant cells 	
	X		<ul style="list-style-type: none"> small protein structure critical to cell division found only in animal cells 	
X			<ul style="list-style-type: none"> organelle containing chlorophyll (used in photosynthesis) found only in plant cells 	
			<ul style="list-style-type: none"> threadlike structure containing genetic or hereditary information contains many different genes 	
			<ul style="list-style-type: none"> area of cell where nutrients are absorbed, transported, & processed contains # of different organelles 	
			<ul style="list-style-type: none"> series of "canals" or interconnected tubes that carry material throughout cell 	
			<ul style="list-style-type: none"> structure that modifies, sorts, and packages these proteins for delivery throughout the cell or outside the cell 	
	X		<ul style="list-style-type: none"> saclike structure formed by Golgi apparatus where digestion takes place (contains proteins to break down large molecules & other cell parts) found only in animal cells 	
			<ul style="list-style-type: none"> tiny, oval-shaped organelle that provides cells with energy 	
			<ul style="list-style-type: none"> spherical structure within the nucleus of some cells probably involved in the making of proteins 	
			<ul style="list-style-type: none"> acts as the control centre directing all cell activities including growth & reproduction 	
			<ul style="list-style-type: none"> organelle that builds proteins essential for cell growth & reproduction 	
			<ul style="list-style-type: none"> small membrane-surrounded compartment that stores water, wastes & other material found in both animal & plant cells (just much larger in plant cells) 	