

## NAME THAT STYLE



### Queen Anne

Drawing of an 1892 Queen Anne style. Note many gables, a turret, large porch, decorative shingles, and elaborate wood decoration.



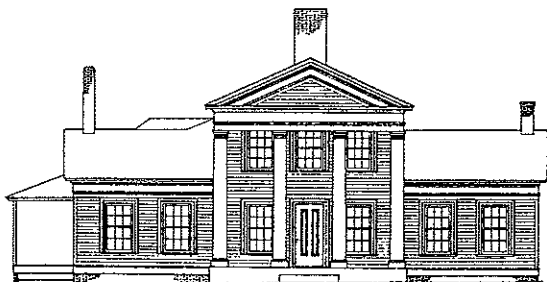
### Neo-Eclectic

This contemporary house features a Palladian window motif, decorated front gables suggestive of a Queen Anne style, and a front porch.



### Colonial Revival – Cape Cod Cottage

Note the large central chimney, gabled dormers, and shingled facade. The front door uses wood trim to hint at classical pillars.



### Greek Revival

This is a drawing of an 1853 Texas Governor's mansion. Note the four columns forming a Classical portico. The facade is symmetrical.



### Colonial Revival – Dutch

Gambrel roof with front shed dormer. This house was available by mail order from Montgomery Ward in 1927.



### Bungalow

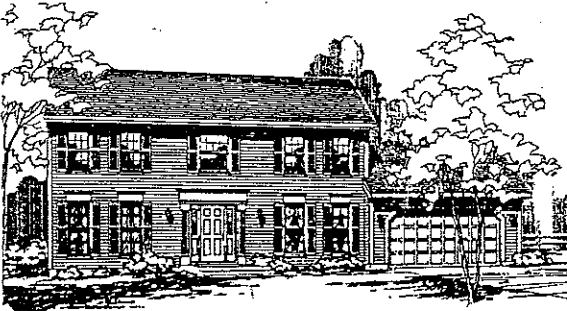
This bungalow of five rooms and one bath was offered by Sears as a mail order house from 1911 through 1920. Note the front shed dormer, full width porch, and exposed roof rafters.

## NAME THAT STYLE CONTINUED



### Prairie Style

This Frank Lloyd Wright design was to be available for the average person. Note wide overhangs, hipped roof, and bands of casement windows.



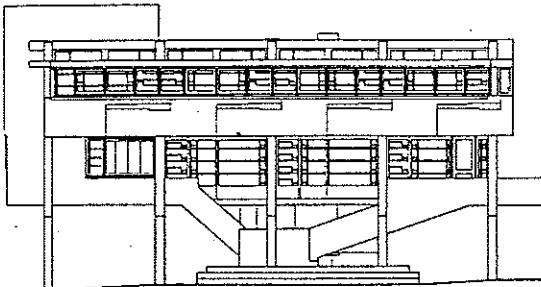
### Colonial Revival - Georgian

This 20th Century Georgian demonstrates a symmetrical facade (spoiled only by the attached garage). Note the front door surround with its suggestions of pillars. Front door features sidelights. This style lacks a central chimney.



### Ranch

This contemporary ranch style illustrates how the attached garage often dominates the design. Note gable decoration above garage door. Many garages still feature small doors or designs suggesting doors. These are "leftovers" from the days when the "garage" was the barn complete with hay loft door.



### International School

This house "floats" on pillars and is an exercise in geometrical lines and space.



### Tudor

This Tudor revival house features wood trim to suggest half timbers, a double gable front, and a decorative chimney. The front door wall is stone, the half timbered front is brick, and the rest of the facade stucco.