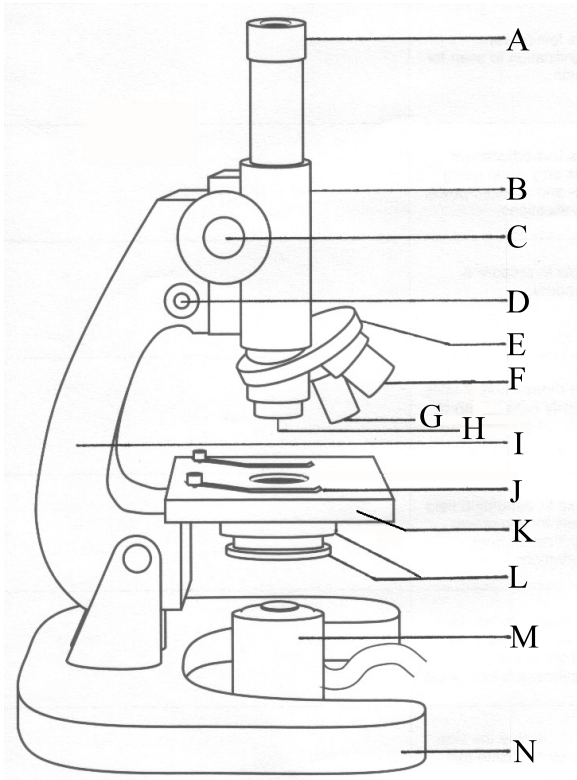


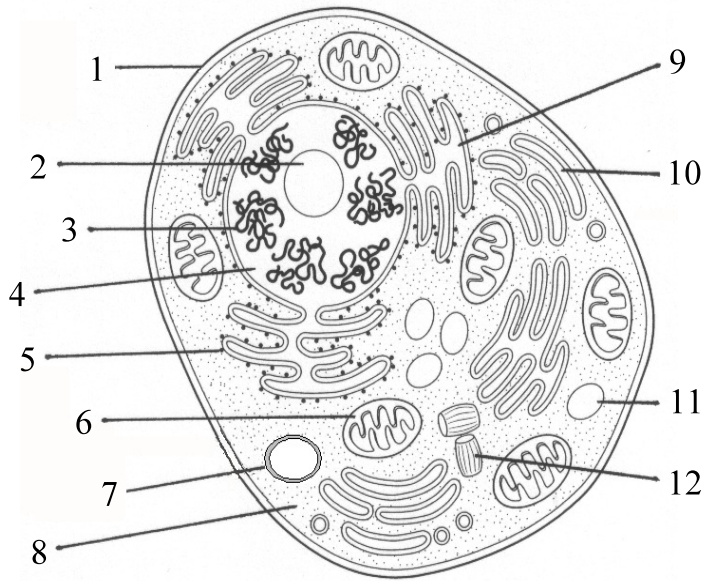
PART A: DIAGRAMS (30 MARKS)

Use the diagrams below to answer the questions on the following page. Place your answers in the appropriate space on your answer sheet.

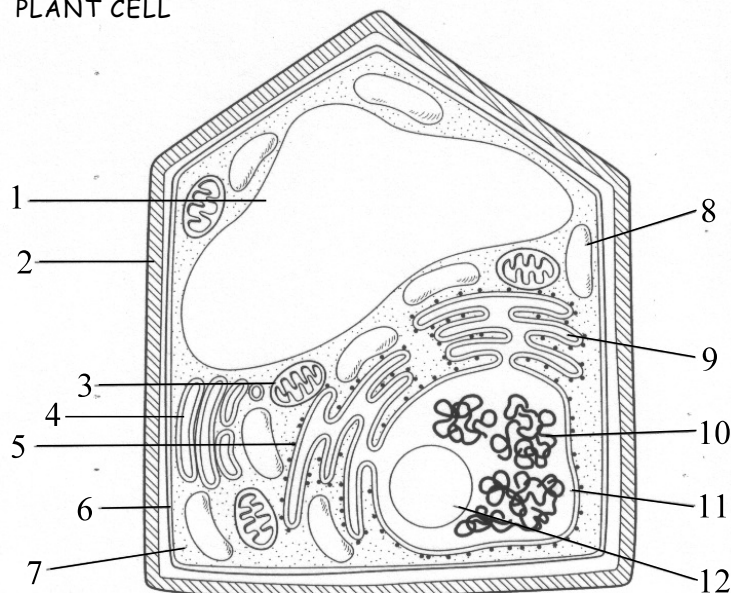
1. MICROSCOPE



2. ANIMAL CELL



3. PLANT CELL



{10} 1. MICROSCOPE

(a) Match each structure named to the diagram.

#	STRUCTURE
	• body tube
	• fine adjustment knob
	• diaphragm & condenser lens
	• ocular lens
	• arm

(b) Name each structure described below.

STRUCTURE	FUNCTION
	• supports microscope
	• used to illuminate specimen
	• supports the microscope slide
	• used with low-power lens ONLY
	• rotates allowing the objective lens to be changed

{10} 2. ANIMAL CELL

(a) Match each structure named to the diagram.

#	STRUCTURE
	• chromosome
	• endoplasmic reticulum
	• nucleus
	• cell membrane

(b) Name each structure described below.

#	STRUCTURE	FUNCTION
		• structure that stores proteins until they are needed inside/outside the cell
		• spherical structure in the nucleus of some cells that makes proteins
		• fluid-filled saclike structure formed by Golgi apparatus (much larger in plants)
		• area of the cell where nutrients are absorbed, transported, & processed

(c) Indicate if the structure is found only in an (A)nimal cell or (B)oth.

AB?	STRUCTURE
	• ribosome
	• mitochondrion
	• centriole

{10} 3. PLANT CELL

(a) Match each structure named to the diagram.

#	STRUCTURE
	• Golgi apparatus
	• cytoplasm
	• ribosome
	• vacuole

(b) Name each structure described below.

#	STRUCTURE	FUNCTION
		• series of "canals" that carry material throughout the cell
		• tiny, oval-shaped organelle that provides the cell with energy
		• rigid material that surrounds cell membrane • protects & supports the cell
		• covers the entire cell • controls the movement of material in & out of cell

(c) Indicate if the structure is found only in an (P)lant cell or (B)oth.

PB?	STRUCTURE
	• chloroplast
	• nucleus
	• chromosome