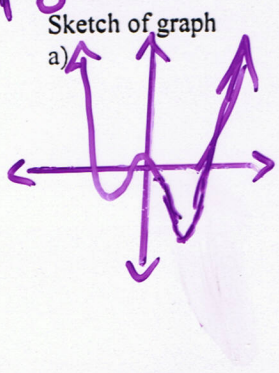


Pg 26 #1 & 2



Least possible Degree <b>4</b>	Sign of leading coefficient <b>+</b>	end behaviour <b>as <math>x \rightarrow \infty, y \rightarrow \infty</math> as <math>x \rightarrow -\infty, y \rightarrow \infty</math></b>	symmetry <b>None</b>
# of min points <b>1</b>	# of max points <b>0</b>	# of local min points <b>1</b>	# of local max points <b>1</b>

Sketch of graph  
b)

Least possible Degree	Sign of leading coefficient	end behaviour	symmetry
# of min points	# of max points	# of local min points	# of local max points

Sketch of graph  
c)

Least possible Degree	Sign of leading coefficient	end behaviour	symmetry
# of min points	# of max points	# of local min points	# of local max points

Sketch of graph  
d)

Least possible Degree	Sign of leading coefficient	end behaviour	symmetry
# of min points	# of max points	# of local min points	# of local max points

Sketch of graph  
e)

Least possible Degree	Sign of leading coefficient	end behaviour	symmetry
# of min points	# of max points	# of local min points	# of local max points

Homework pg 26 # 3, 4, 6, 7